

OsteoMeasure The Standard in Bone Histomorphometry

High Resolution Digital Color Video System

Extensive interactive Bone Histomorphometry analysis system. Based on ASBMR Standard Nomenclature, uses specialized measurement list to automatically calculate over 341 parameters of bone. In the Trabecular Bone template there are 81 primary measurements and 122 derived measurements. In the new Cortical Bone template there are 54 primary measurements and 84 derived measurements. Cortical kinetic data are calculated independently for the periosteal, endocortical and osteonal envelopes. Intelligent open measurements may be redefined for experimental, unconventional or other uses. These custom measurements now include 32 surfaces, 10 simple areas, 10 areas with double surfaces and 10 point counts. In addition, there are 10 custom area measurements that can be made by thresholding. The system automatically compensates for the kinetic labelling method employed. Sophisticated Data Handling integrates independent measurements from serial sections. Sophisticated Data Viewer allows composition of data from primary or derived data, automatically collates all data within a particular folder. Supports Cut & Paste with all common spreadsheet-based packages - allows more sophisticated or unconventional analysis. Entire system is menu driven and user friendly with extensive help system and bone specific prompts and options. New features include full windows filenames, thresholded area measurements and more sophisticated image-editing capabilities. GLP validation package available. **Download updates on demand and at no cost from website. No hidden costs or annual fees.**



High resolution Digital Color video camera. 17.28 Megapixel resolution for greater image detail. Intuitive, easy-to-use image capture software, with customizable toolbar, for image acquisition and management. Fifteen frames per second live display at full resolution (1600 x 1200). 3 live image preview windows: full screen, full resolution, and zoom. 2X live zoom preview with panning,. Peltier cooled to 10° C below ambient. 14-bit color depth for superb color fidelity (14-bit saved as a 48-bit file). 5 selectable image resolutions: 4800 x 3600, 2400 x 1800, 1600 x 1200, 800 x 600 (1x1) and 800x600 (2x2). 5 selectable ISO sensitivities; 100,200, 400, 800, and 1600. Exposure times ranging from 23 µs to 60 s. Levels adjustment both live and post processing. Time-lapse: acquire a series of images as an AVI, or MPEG-1 movie. Shutter control. 3 Autofocus aids for easy focusing. Scale bar with the ability to calibrate objectives, annotation, and time/date labeling. Autosave files. Image merging with pixel registration. Shading correction. TWAIN interface: works with Microsoft applications, Photoshop, many Laboratory Information Software companies (LIS), and other 3rd party software.

Enhanced CPU for OsteoMeasure Digital Color Video System. Windows 7 Professional SP1 64-bit, 3.7 GHz Intel Quad Core Xeon Processor, 16 GB RAM, 256 GB SATA SSD, 1 TB SATA 3 Gb/s HD, 16X DVD+/-RW, 1 Serial port, 4 USB 2.0 & 5 USB 3.0 ports. USB Keyboard & Mouse. Compatible with OsteoMeasure High Resolution Digital Video Camera.



27" Ultrasharp High Contrast 2560x1440 Touchscreen flat panel monitor. Draw directly on the image on the flat panel screen with pen. Much better hand-eye coordination for faster and more accurate measurement.

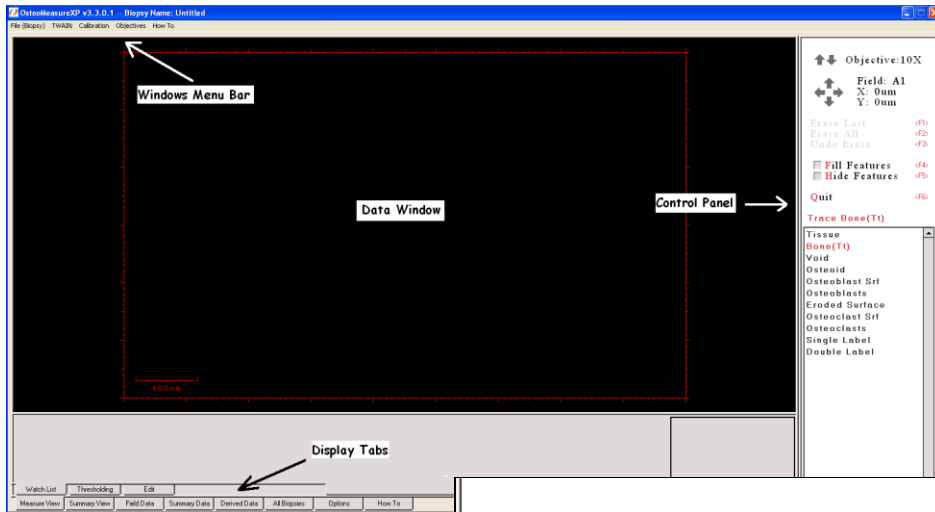


On-site Installation and Training - 1 and 2 day options - available in the following regions:
North America - Western Europe - Australia or New Zealand - China, Japan or S. Korea



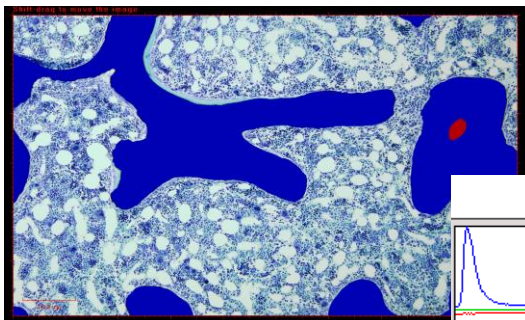
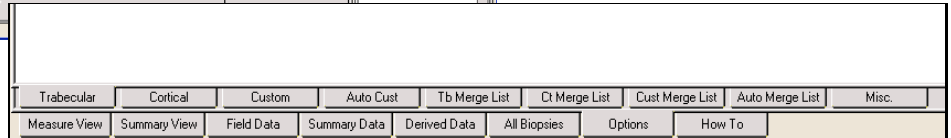
OsteoMeasure

Bone Histomorphometry
Kept Simple

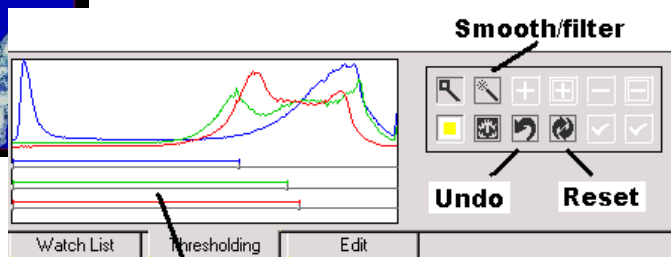


Straightforward
User Interface

Well-organized
Measurements and Options



Effective Thresholding Tools



Clickable bars

All your data in one click....

	T.Ar	B.Ar	O.Ar	B.Pm	O.Pm	BV/TV	OV/BV	BS/BV
Untitled	0.0000000	0.0000000	0.0000000	0.0000	0.0000	*	*	*
Untitled02	0.5400000	0.1411399	0.0030752	8.7462	0.3289	26.1370	2.1789	61.9684
Untitled03	0.5400000	0.2572999	0.0000000	7.3062	-0.0000	47.6481	0.0000	28.3958
Untitled04	0.5400000	0.1689431	0.0000000	12.3482	-0.0000	31.2858	0.0000	73.0910
Untitled05	0.5400000	0.1813559	0.0000000	6.6534	-0.0000	33.5844	0.0000	36.6871
Untitled06	0.5400000	0.3580201	0.0018396	13.5639	0.2186	66.3000	0.5138	37.8858
Untitled07	0.5845988	0.3326913	0.0000000	11.7222	0.0000	56.9093	0.0000	35.2345

Settings:
 2D-3D Correction Factor - 1.000
 Label Surface Calculation - L.Pm = dL.Pm+sL.Pm/2
 Interlabel Time - 10 days
 Kinetic Unit - BFR/BV,TV (%/d)
 Bone Measurement Mode - Total Bone (including osteoid)
 Aj.AR Mode - Always as calculated
 MAR Mode - MAR = missing
 Measured Ct Bone Area - Includes Both marrow Voids and Osteonal Voids
 Merge Option - Merge Off

